

Code: 13A03303

R13

B.Tech II Year I Semester (R13) Supplementary Examinations November/December 2016

MACHINE DRAWING
(Mechanical Engineering)

Time: 4 hours

Max. Marks: 70

All answer should be on the drawing sheet only
Answers on the drawing sheet only will be valued
First angle projections to be adopted

Section – I

Answer any two of the following (2 × 4 = 08 Marks)

- 1 Sketch the conventional representation of the following:
 - (a) Steel
 - (b) Glass.
 - (c) Oil.
 - (d) Concrete.
- 2 Draw the Conventional representation of External Screw threads and semi elliptic leaf spring with eyes.
- 3 Explain methods of indicating dimensions with neat sketches.

Section – II

Answer any two of the following (2 × 10 = 20 Marks)

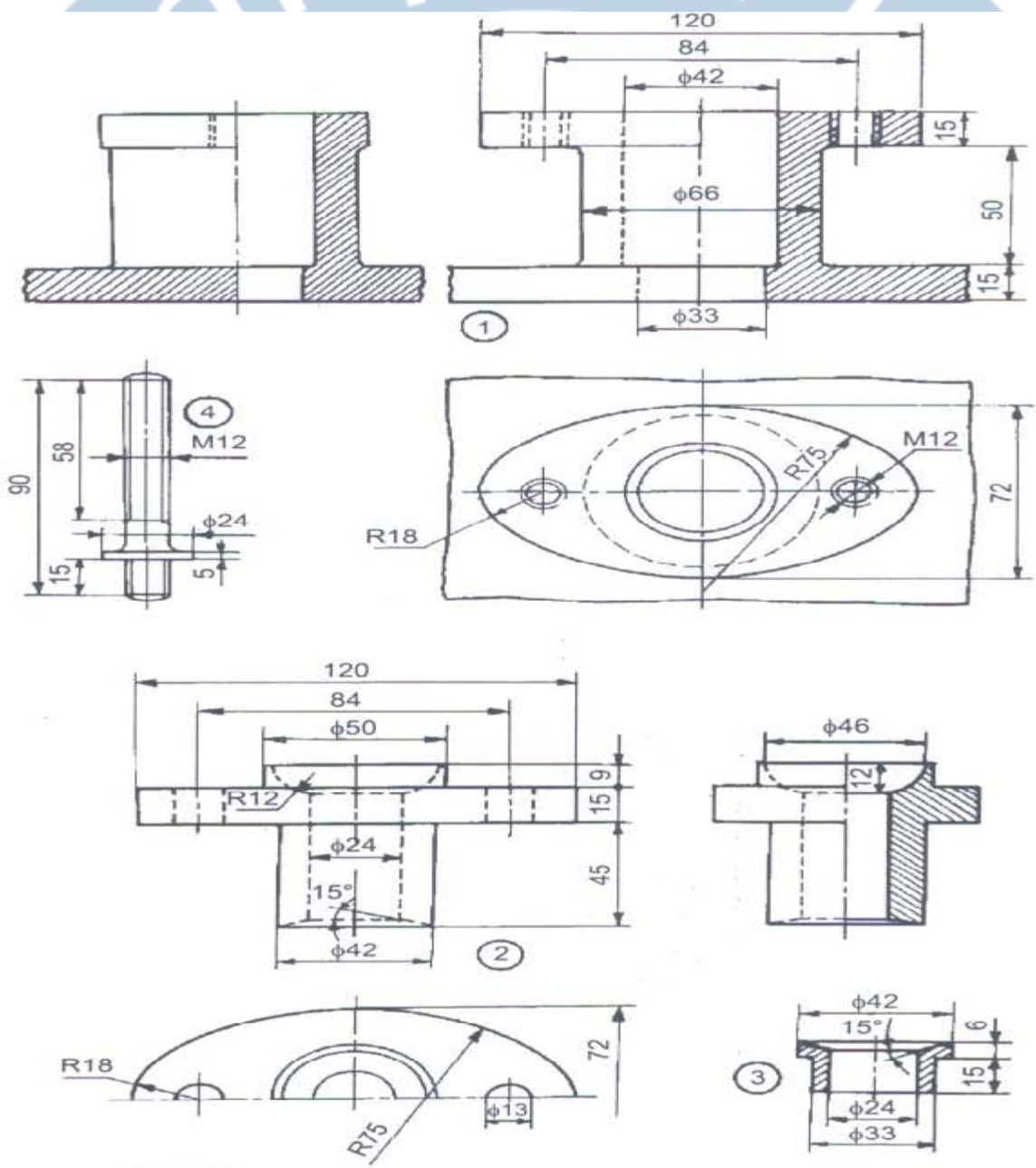
- 4 Draw sectional front view and top view of Double Riveted Single Cover Lap-Joint to connect plates of 20 mm thickness.
- 5 Draw proportionate diagram of sleeve and cotter joint to connect two shafts of 30 mm diameter.
- 6 Draw two views of the flexible flange coupling to join two shafts of diameter 40 mm.

Section – III

Answer the following (1 × 42 = 42 Marks)

- 7 The details of stuffing box are shown in figure below. Draw the following assembled views:
 - (a) Full sectional front view.
 - (b) View from above.

Contd. in page 2



Parts list

Part No.	Name	Matl	Qty
1	Body	CI	1
2	Gland	Brass	1
3	Bush	Brass	1
4	Stud	MS	2
5	Nut, M12	MS	2

Stuffing Box
